



Dear Cottagers and Community Members

Happy Spring Crystal Lake!

As the weather warms up, we are excited for another season of community events, lake activities and neighborhood connection.

I will be stepping down as President and will take on the Past President role. It is a pleasure serving this community, and I am grateful for everyone on the Board and the volunteers who contribute their time and energy to make CLCA a great success.

I would like to thank Shawn Baldwin for being the Lake Steward for several years, and to welcome Paul Camozzi for taking on this important role.

If you are interested in getting involved, please reach out to us, as volunteers keep our community strong.

**Warm regards,
John Fernandes, President CLCA**

Meet the CLCA Board Members

President	John Fernandes
Vice President	Christine Brickman
Secretary	Sharon Brickman
Treasurer	Carol Ing
Membership	Linda Mielewczyk
Past President	John Hubbard
Board Member	Rainey Weidauer

Lake Steward: Paul Camozzi

CLCA AGM Business Meeting 2026

- CLCA AGM Business
- Lake Stewardship/Water Quality
- 2026 Crystal Lake and area Events & other topics
- Board Elections
- Questions & Answers
- Quest Speakers: Carolyn Richards KATVA & Janice Freund on Rodenticides
- TL Historical Society Open House

2026 ANNUAL GENERAL MEETING

JUNE 14, 2026 AT 10:00AM GALWAY HALL
IN PERSON + AVAILABLE ON ZOOM

AGM BUSINESS
LAKE STEWARDSHIP/WATER QUALITY UPDATES
BOARD ELECTIONS
GUEST SPEAKERS:
CAROLYN RICHARDS OF KAWARTHA ATV ASSOCIATION
JANICE FREUND ON THE DANGERS OF RODENTICIDES

MEETING TO BE FOLLOWED BY A LIGHT LUNCH AND BEVERAGES

WE HOPE TO SEE YOU THERE!

The 2026 membership fees are now due!

We hope we are providing support to our community and beyond.

Our volunteer's rock! Your continued support is the motivation needed so they will keep giving their time.

Vist our website: Crystallakecottagers.ca select members Tab



CLCA Events 2026

- ✓ CLCA AGM Galway Hall: June 14, 10 am
- ✓ Canada Day Floatilla: July 4, 2pm
- ✓ Haunt the Docks: August 22, 2pm
- ✓ Kinmount Fall Food Drive: Oct 2 – 4 and Oct 9 - 12



Other Community Events 2026

- ✓ Kinmount Music In the Park: Every Thursday starting July 9
- ✓ Farmers Market: Every Sat 9- 2pm starting May 16th to Thanksgiving
- ✓ Kinmount Fair: Labor Day Weekend Sept 4-6
- ✓ Artisans Marketplace: Weekdays 11- 5pm, Sat 10- 5pm, Sun 10- 4pm
- ✓ Highlands Cinema: May 1 for the season www.highlandscinemas.com
- ✓ PickleBall Kinmount Arena: Mon, Wed & Friday July 3 – Aug 12, 9-11 am
- ✓ Galway Hall: See below for full list of activities

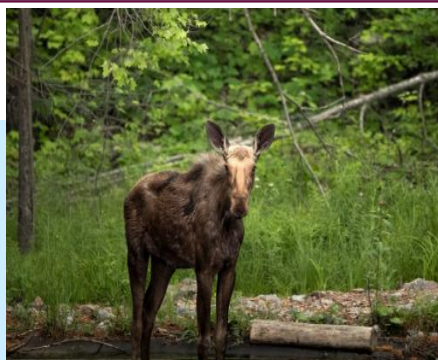
Galway Hall Calendar 2026

- Name That Tune Music Trivia & Dance May 23 @ 7pm
- Kinmount District Health Services June 6 @ 7pm, Oh Canada music of Gordon Lightfoot & Neil Young performance Keith Kirkpatrick & Larry Shepherd
- Community Yard Sale & BBQ (hosted by the Fire Fighters) June 13, 9 am – 2pm
- Trent Lakes Historical Society Open House June 14th 1pm to 3pm
- Porch Sign Paint Party June 27 @ 11 am
- Annual Turkey Supper November 6th @ 5pm
- Galway Hall Annual General Meeting November 23 @ 1pm
- Kinmount Community Volunteers Music Night December 5 @ 7pm

Regular on-going Events

- Line Dancing every Wednesday 10 am
- Euchre every other Friday 7 pm May 22 thru to Nov 20
- Canadian Firearms Safety Course – once per month - see Galway Hall calendar
 - Trent Lakes Historical Society every 2nd and 4th Friday 10:30 to 2pm

Follow Galway Hall on Facebook or website at Galwahall.ca



Crystal Lake Community Association

IT'S BACK!

CANADA DAY FLOATILLA

You asked, we listened!
Join us for a Canadian celebration in true fashion. Decorate your boat and join us for a float!
Saturday, July 4th
2pm start – boats gather around Gull Island
Prizes for best decorated boats
Judging, prizes and ice cream to follow





TRENT LAKES
TREE SERVICE

PROFESSIONAL ARBORISTS

LICENSED • EXPERIENCED • INSURED
FREE ESTIMATES • CALL TODAY

- REMOVALS / PRUNING
- SHRUB & HEDGE TRIMMING
- LOT & HYDRO LINE CLEARING
- CHIPPING SERVICES
- PLANTING
- CABLING & BRACING

(705) • 878 • 6771

TRENTLAKES.TREESERVICE@GMAIL.COM | FOLLOW US ON

Baldy's
Custom Renovations &
General Repairs

Call Shaun For Your Free Estimate
519-221-5230

TripInsure
INC.
Travel Insurance Broker

- Emergency Medical Coverage
- Cancellation & Interruption
- Visitors to Canada/Super Visa
- Student Plans
- 20 Years of Experience

✉ jsmith@trip-insure.ca
☎ 416-624-8567
🌐 www.trip-insure.ca

Jacqueline Smith
Licensed Broker

Connell
HOMES inc.

705-793-9338
www.connellhomes.ca

New Homes, Cottages,
Additions, Renovations
Insulated Concrete Forms

Full Service Marine Dealership

WALSTEN
Marine.com
705-488-2811
3613 County Road 121,
Kinmount

YAMAHA *Revs Your Heart* MONTEREY BOATS STINGRAY Boats
WaveRunner ALUMACRAFT BENNINGTON

JENN HAWTHORN
Sales Representative

Office: 705-880-2255
Cell: 905-269-0857

BALL
First Estate Inc. Brokerage
90 Bolton St. Burlington, ON N7M 1A8

jennhawthorn@gmail.com

castle
building centres

Kinmount

Paluski Kayak
Sales and Rentals

Lumber
Plywood
Paneling
Drywall
Insulation
Windows
Doors
Roof Trusses
Plumbing
Electrical
Roofing
Concrete
products
Paint & Stain
Trex Decking

J. AUSTIN & SONS LIMITED
705-488-2961 1-877-488-2961
www.jaustinandsons.com austin@jaustinandsons.com

Kayaks and Water Toys

AVIVA
All ATL
Products
Available at
J. Austin

Paluski

ATL distributing www.atldistributing.ca

AR
ELECTRIC

GENERAC
AUTHORIZED DEALER
SALES | SERVICE | INSTALLATION

ECRA 7014348

Brent Mortson 416-721-1107

THANK YOU to our
SPONSORS!

Stuart Charity Construction Ltd

Custom Homes and Cottages
Additions, Garages
Insulated Concrete Forms

705.738.5546
stuartcharityconstruction@bell.net



Call **Steve!**

ROYAL LEPAGE
LAKES of HALIBURTON
MULTI-MEDIA VIDEO AND OPTIMIZED WEBSITE

Cell/Text 416-271-6844
Kinmount Office 705-488-3060
Steve Brand CD, Sales Representative

Local Agent • Local Knowledge • Since 2007

FIREPLACE



Fully Insured Contractor  Wett Certified Technician

Kawartha Home and Hearth Ltd.
James Barrieau email: khhltd@gmail.com

FIREPLACES (705) 340-2123
www.kawarthahomeandhearth.com

THANK YOU to our SPONSORS!



GRAVEL DRIVE



-DUMP TRUCK DELIVERIES -EXCAVATING
-GRAVEL DRIVEWAY GRADING EXPERTS
CALL/TEXT JAY 905-410-5058

DON'T KEEP ME A SECRET!

Lisa Mercer
Broker
LISAMERCER.CA
705-457-0364
RE/MAX PROFESSIONALS NORTH
BROKERS BASE INDEPENDENTLY OWNED & OPERATED




RE/MAX PROFESSIONALS NORTH

Kelly Mercer
Broker
705-455-7500
www.kelly-mercerc.ca
kelly@kelly-mercerc.ca



Are You Interested in Advertising?
We will promote your business on website, social media, sponsor board, events & newsletters

Contact us for more details at crystallakecommunityassoc@gmail.com

Our website receives a huge # of hits!

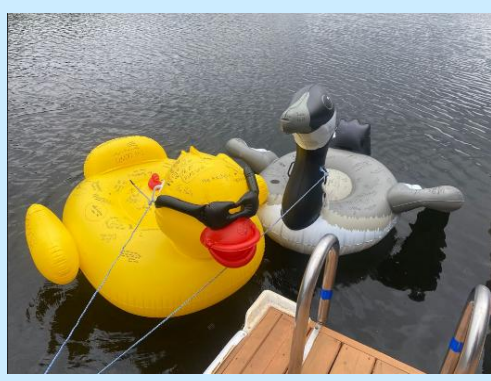
What does CLCA do?

CLCA focuses on and represents the interests of Crystal Lake waterfront property and area residents, and to provide a sense of Community and Pride!

- ✚ We organize and sponsor Crystal Lake events like Canada Day, Haunt the Docks & fall Food Drive
- ✚ We purchase and maintain buoys to mark some of the rocks and shoals on Crystal Lake.
- ✚ We maintain a website to keep us informed, share events, photos and other interesting stuff!
- ✚ Donations to support Volunteer organizations: Music in the Park, Turtle Guardians, Foodbanks & Woodlands Wildlife
- ✚ Provide 'members only' useful items – the Crystal Lake map, Emergency Contact Fridge Magnet & Promo Codes
- ✚ We keep the Welcome Signs and various planters looking beautiful
- ✚ Partnering to get Members Only Promotions and Discounts such as Cottage Life and FOCA

CLCA acts as a liaison and represents us all on various important matters:

- ✚ We liaise with the Municipality of Trent Lakes Council and staff: Waste management, road maintenance, development and by-laws and policies that impact Crystal Lake and area
- ✚ We support the Crystal Lake Steward & Trent Kawartha Highlands in taking water samples for testing and monitoring the water quality for clarity, phosphorus levels and invasive species (i.e. zebra mussels).



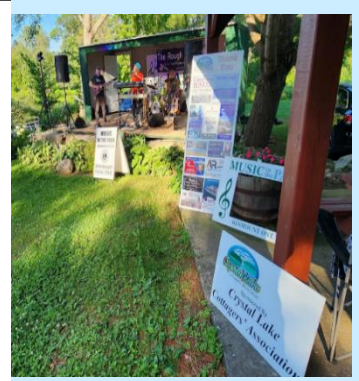
2026 CONCERT SERIES

Thursdays 6:30 pm
Kinmount Austin Sawmill Park

Hosted by the Kinmount Community Volunteer Management Committee

JULY		AUGUST	
July 9 The Marc Eakins Band	Sponsor: Reid's Auto & Fabrication Custom Cottage Concierge - Shannon Jonas	Aug. 6 Melissa Payne	Sponsor: Violet's Frozen Yogurt Swinson Haulage
July 16 Keith Auty	Sponsor: Davis Lake Cottage Association Sponsor: Kawartha Financial Services	Aug. 13 Jeff & Anthony "Margin Call"	Sponsor: Crystal Lake Community Association Sponsor: Connell Homes
July 23 Richard and the Wanted	Sponsor: Lorraine's Floral Creations Sponsor: What's Your Sign	Aug. 20 Jeff Moulton and Friends	Sponsor: Salmon Lake Cottage Owners Association Sponsor: Kinmount Pharmacy
July 30 Cash on the Barrelhead	Sponsor: Reid Auto Fabricators Sponsor: J C's Cuts & More	Aug. 27 Boots of Hazard	Sponsor: Stuart Charity Construction Sponsor: Kinmount Legion Branch 441

THANK YOU TO :
 THE KINMOUNT & DISTRICT LIONS CLUB for their Generous Donation and
 THE KINMOUNT ARTISANS MARKET for their Weekly draw of gift certificates
 BBQ by Linda J



Keep the Crystal in Crystal Lake!

➤ We thank Shawn Baldin for his years of dedication as our Lake Steward and welcome Paul Camozzi:



Crystal Lake Lake Stewardship Water Results for 2025

As we embark on another cottage season it is important to remember our environment and water quality. We have received the results from the July 2025 Trent Kawartha Highlands Water Quality testing.

➤ **Phosphorous level:** *Avg 6.86 actual 8.18 (under 10 is good)

The increase in Phosphorous levels is a bit of a concern because of the impact on the lake ecosystem and oxygen levels. This can result in increase in toxic algae blooms and weeds which impacts our natural resources and wildlife. It can be attributed to use of fertilizers, disruption to deep water sediment, water run-off, wastewater and environmental impacts.

We will monitor this to see if a continued upward trend

➤ **Secchi depth:** Avg 6.07 Actual 5.0 = Healthy Lake

➤ **Dissolved Calcium:** Avg 32.56 Actual 40.60

Indicates hard water which is common = potential cause of zebra mussels

➤ **Chlorophyll Concentration:** Avg 2.08 Actual 1.75 = Good

Leads to better clarity in the water and less nutrient pollution

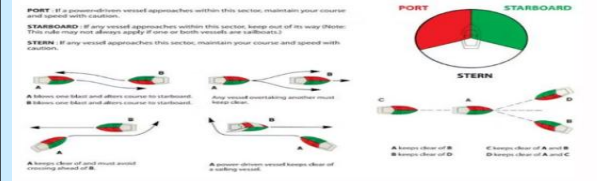
In summary, Crystal Lake continues to be a healthy lake, we continue to monitor and work with various organizations to have the lake tested annually.

Crystal Lake Lake Steward: Paul Camozzi

*Note: Average over 10 years of samples



Then there's overtaking, which is arguably the most straightforward rule that still causes issues. If you're coming up from behind another vessel, you are always the give-way vessel, regardless of boat size or speed. The overtaking vessel must keep clear of the vessel being overtaken until it is "finally past and clear." However, where things really break down is in real-world interpretation. Boaters often assume "bigger boat wins" or "faster boat goes first." Neither is true. What's even more misunderstood is that just because you have the right of way doesn't mean you should hold your course blindly. The stand-on vessel is required to maintain course, but also to act if a collision becomes likely. The responsibility for keeping clear remains firmly with the overtaking vessel.



Kinmount Pickleball - Kinmount Fairgrounds

Pickleball 3 days per week July 3-Aug 12
Monday, Wednesday and Friday

Join Kinmount Pickleball Facebook site



IDEAS AND VOLUNTEERS WANTED!

Are you interested in helping out with an event or an initiative? Do you have great ideas to share? Do you have questions to ask or comments to offer? If so, we would love to hear from you!!

Please send us a note at crystallakecommunityassoc@gmail.com.

You can help with canvassing your neighbours or taking on a section of the lake, please let us know!



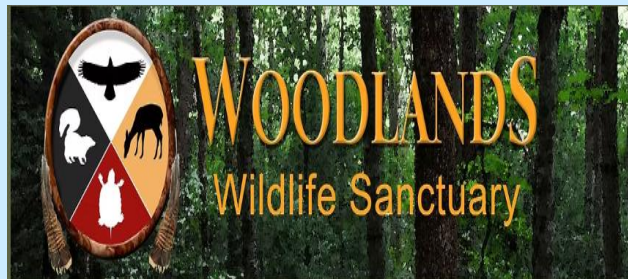
Our Loons

The loons have returned and will be actively nesting. A recent study has shown that loon populations are declining, with major causes being loss of habitat and water levels. There are a few simple things we can all do to protect our loons including:

- + Watch your wake, the lake levels are generally high during mating and nesting season, one wave can flood a nest and destroy the eggs, meaning the pair will have no chicks for the year
- + Respect their space, if you see a nest please stay clear
- + Try and leave shorelines as natural as possible



www.youtube.com/watch?v=6jdaDCASUx0



CLCA have long standing membership with various associations. A strong, united voice is important when advocating on behalf of our members –

- + **Coalition for Equitable Water Flow (CEWF):**
 - Work to implement equitable water management policies for the Trent-Severn Waterway taking all those affected into account. Visit CEWF's website
- ✓ **Federation of Ontario Cottagers' Associations (FOCA):**
 - Your membership dues help to support FOCA. They are dedicated to supporting the interests of Ontario's waterfront property owners for 550 Associations.
 - FOCA provides credible expertise, environmental stewardship, Lake Partner, E-Alerts & programs & services with a large network
 - If you are a CLCA member you get discounts: Rogers, Rescue 7, Cade Insurance, Cotage Life, Park'N Fly, Softub, On the Water Designs & Action First Aid



Register to Vote

You can cast a ballot in the Municipality of Trent Lakes if you're:

- a Canadian citizen;
- at least 18 years old on Voting Day (**October 26, 2026**);
- a Trent Lakes resident or an owner or tenant of land in Trent Lakes (or the spouse of such owner or tenant); and;
- not prohibited by law from voting.

Register today.

RegisterToVoteON.ca
1.866.242.3025

You can check, update or add yourself to the Voters' List with Elections Ontario **until August 12**, or directly with the Municipality after this date.

Taking a few minutes to review and update your information will help ensure the Voters' List is accurate and that you're ready to participate in the October municipal and school board election.

Register to Vote

Interested Candidates

The candidate nomination period for the 2026 Municipal Election is now open.



Residents interested in running for Municipal Council may file their nomination in person at the municipal office, during regular business hours, from May 1, 2026 to August 20, 2026 and from 9:00 a.m. to 2:00 p.m. on August 21, 2026.

Appointments scheduled ahead of time are encouraged.

Those seeking to file a nomination are encouraged to read the Candidate Information Package and the other resources provided on our website for full details.

The new term of office for elected officials in these offices is November 15, 2026 to November 14, 2030.

Crystal Lake Map

The revised Crystal Lake Map has been distributed to our members!



OPP Patrol

The OPP patrol both our lake and roads during the day and night. Know and follow the rules of the lake and road.

For more information on safe boating visit the [Transport Canada](https://www.transportcanada.gc.ca) website.



Crystal Lake Red Chair at White's Beach

The red chair has been a big hit! Share your family fun pics with us....



On a busy summer afternoon, there's a moment every boater eventually faces: another vessel is approaching, neither of you is slowing down, and both operators are quietly wondering, *who's supposed to move?*

It isn't about politeness or size. It's governed by a clear, and often misunderstood, set of rules. There has never been a better time to read up on the [International Regulations for Preventing Collisions at Sea](#), also known as COLREGS.

At the core to understanding give-way vs. stand-on are three basic encounter types: crossing, overtaking, and head-on. Put another way, the core of boating navigation is about understanding who is the "give-way" vessel and who is the "stand-on" vessel.

In a crossing situation, the boat on your starboard (right) side has precedence. That means if another vessel is approaching from your right, you are the "give-way" vessel. You must alter course early and obviously. The biggest mistake boaters make here is hesitating or making small, unclear adjustments. If you are giving way, make it obvious.

Head-on situations are simpler in theory but are still frequently mishandled. When two boats approach directly, both should alter course to starboard, essentially passing port-to-port. Yet many operators either freeze or make last-second moves that create confusion.



Be careful around open water during the winter!

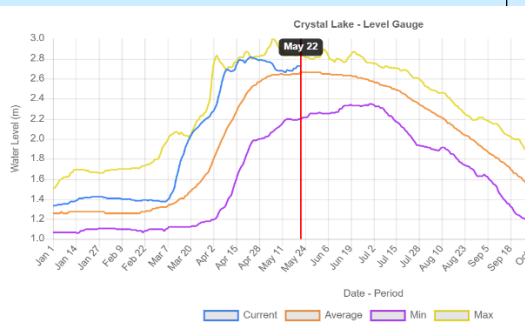
There are a few ice dock bubblers around Crystal Lake and there is open water going into Upper Black Bay



Water Levels

Water levels are important to all of us on Crystal Lake. The Coalition of Equitable Water Flow CEWF, are one of the organizations the CLCA supports. As seen in the chart the water levels on Crystal Lake are above average for this time of year.

Water levels will continue to fluctuate based on the needs of the Trent and weather conditions.



Buoys/Markers

We have buoys around Crystal Lake to mark some of the rocks and shoals.

We have a team of volunteers that put them out and bring them back in – no matter what the weather conditions!

CLCA maintain the buoys – your membership dues go towards buoys, anchors and hardware.

Your CLCA dues going to good use!



Note: please be cautious navigating Around the lake, as rocks and Floating debris can be hazardous at all times of the year

Fridge Magnet

The Emergency Contact Fridge Magnets Have been distributed – let us know if you need one.

Write your property address and contact info in case of an emergency. Many get flustered in an emergency!

Supported and organized by CLCA

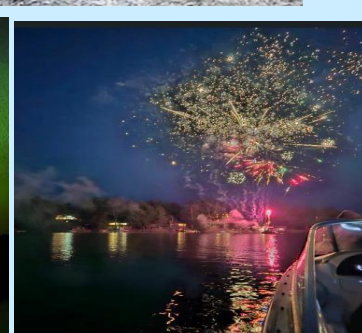


Be Wake Aware – Impacts of your Wake!

- ✓ Smaller watercraft like kayaks, fishing boats and SUP's can be easily capsized
- ✓ Swimmers can be tumbled and injured
- ✓ Boat wake causes shoreline erosion
- ✓ Nesting birds (loons) on the shore can have their nests destroyed
- ✓ Disruptive to your neighbors AND damage to docks and ramps

What can we all do?

- ✓ Be aware of the size of your wake at all times
- ✓ Position passengers thru-out the boat to reduce time spent in transition
- ✓ Look behind you to minimize the impact of your wake
- ✓ Reduce your speed to less than 10 km/h 30m from shore, docks and swimmers
- ✓ Water-ski, tube, surf & wake-board 200 meters away from all shorelines
- ✓ Consider the size of the wake produced when purchasing a new boat
- ✓ Watch Wake Aware : <https://www.youtube.com/watch?v=X3bYBPbP0qk>



Join Crystal Lake Community Association 2026



The Crystal Lake Community Association represents you and your interests as a property owner. It is important that we have a strong association represented by **all property owners** so we can say we represent the majority of all Crystal Lake residents.

Our membership has been increasing every year thank you for your continued support!

We know your property is a major investment, so why not join the CLCA so we can help protect that investment and your interests. Membership is only \$20 annually per property.

We also offer the option for you to pay your membership fee for up to 5 years at a time.

Visit our website at www.crystallakecottagers.ca to make your online payment:

We want to hear from you, contact us at : crystallakecommunityassoc@gmail.com or crystallake.memberships@gmail.com



Kinmount Foodbank Donations



Unencapsulated Dock Foam Why should we care?

Unencapsulated dock foam is made from polystyrene, a type of plastic commonly used to float docks. Unlike encapsulated foam—which is protected by a durable plastic shell—unencapsulated foam is exposed to the elements, making it highly susceptible to breaking apart over time due to UV rays, ice movement, and wave action.

Problematic Environmental Impacts

- ♻️ **Shoreline Pollution:** Large amounts of foam fragments wash up along the shoreline and are nearly impossible to clean up. Over time, they degrade into microplastics smaller than 5 mm—but never go away.
- ♻️ **Harm to Wildlife:** Birds, fish, and aquatic species can ingest foam fragments and microplastics as food, affecting their growth, survival, reproduction, feeding and swimming.
- ♻️ **Chemical Leaching:** As foam breaks down, it can release harmful chemicals into the water, adding to pollution and threatening sensitive ecosystems.

Bill 228 came into effect in May 2023, prohibiting the use of unencapsulated polystyrene in new floating docks, platforms, and buoys. It's an important step—but awareness remains low, and the law **only** applies to future purchases.

Crystal Lake Transfer Site



Summer hours are in effect from April 15 to September 15 and include:

- Sunday - 11:00 a.m. to 7:00 p.m.
- Monday - 8:00 a.m. to 1:00 p.m.
- Tuesday - Closed
- Wednesday - 8:00 a.m. to 2:00 p.m.
- Thursday - Closed
- Friday - Closed
- Saturday - 8:00 a.m. to 4:00 p.m.



No Lifejacket/PFD Excuses 28 years of policing

- I am a good swimmer
- I just live right there
- It doesn't fit well
- I get a bad tan
- I never see the police here
- I don't have to wear it
- I have been boating in this lake for years
- They are under the seat/bow
- I live around the corner

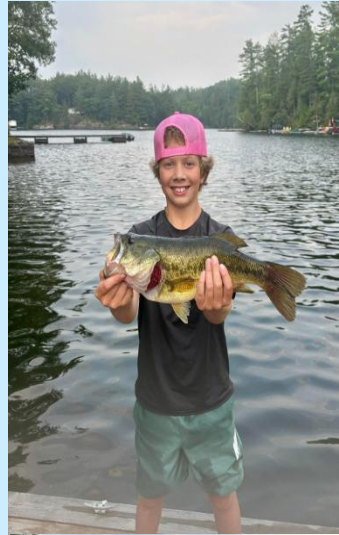
- They were here yesterday
- They are in the other boat we have
- First trip of the season
- My "help" gets the boat ready
- I thought the marina would do it
- Its my friend's boat – not sure where they are



BOATER'S CODE

Respectful boating guidelines from Safe Quiet Lakes

1. I will never operate my boat beyond the level of my skills.
2. I will be aware of and obey all laws and regulations governing operation of my boat.
3. I will operate my boat with caution and courtesy to others at all times.
4. I will minimize my wake impact on shorelines, docks, structures and people.
5. I will always steer well clear of other boats, swimmers and wildlife.
6. I will set a speed and heading that is safe and comfortable for my passengers and others on the water.
7. I will provide safety instructions and offer appropriate life jackets or PFDs to everyone who travels in my boat.
8. I will carry all equipment necessary to operate my boat safely and within the law.
9. I will not consume drugs and alcohol in my boat or allow my boat to be operated by anyone who is impaired.
10. I understand that boating is a shared experience and I will not create excessive noise or operate my boat in a manner that disrupts the peaceful enjoyment of the lake by others.



CLEAN + DRAIN + DRY YOUR BOAT



Motors, boats, and Ontario's ecosystems can be ruined by zebra mussels and other aquatic invasive species. Take a few simple steps to preserve our lakes and fisheries: **CLEAN** off any plants or debris, **DRAIN** bilges and ballast water, and **DRY** any wet areas of your boat.

